

## CONGRATULATIONS ON PURCHASING YOUR REDBIRD TD/TD2! READ THIS GUIDE TO GET STARTED.

### THINGS TO KNOW PRIOR TO INSTALLATION



You will need a sturdy, solid table with a maximum tabletop thickness of 2.25" including rails and the underlying structure.

There must be at least 29" between the legs.

If you are not installing your TD/TD2 on the optional Redbird TD Table, you must install the adjustable supporting leg.

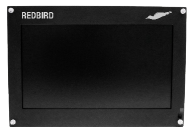
No tools are required for installation. The assembly is performed by hand-tightening only. The use of tools may lead to damage.

Lift all items from both sides using correct lifting techniques. Seek assistance when lifting larger items.

Retain all original packaging and shipping materials.

Any unauthorized software on your Redbird TD/TD2 is prohibited and will void your warranty.

## What's in the TD/TD2 Boxes



Monitor



Acrylic Panel



Lower Switch Panel



Keyboard



Speakers



Panel Thumbscrews



Computer



DVI-D to HDMI Video Cable (1)



Adjustable Supporting Leg



Thumbscrews

## IF YOU PURCHASED THE OPTIONAL REDBIRD TD/TD2 3-SCREEN EXPANSION KIT THIS SIDE OF THE GUIDE PERTAINS TO IT.



### Important Safety Notice:

Due to the added weight of the additional monitors, the 3-monitor upgrade must be installed on a Redbird TD table or a Redbird TD Platform.



### THINGS TO KNOW PRIOR TO INSTALLATION

Requires the new TD/TD2 monitor setup with removable acrylic panels.

Requires two (2) people to assemble.

Requires a #2 Phillips screwdriver. (Not included)

Unit requires 4 outlets - a power strip may be required. (Not included)

## What's in the Expansion Box

A - Support Screws (10)



(1/4-20 x 3/4")

B - Monitor Screws (8)



C - 5-32" Allen Wrench (1)



F - Monitor Wing Support Brackets (2)



D - HDMI to HDMI Video Cable (2)



J - HDMI to DP Adaptor



G - Monitor Power Cables (2)



H - Support Block (1)



I - Monitor (2)



## STEP 1: Position the Lower Switch Panel and Install the Adjustable Supporting Leg

### Lower Switch Panel

- Slide the Lower Switch Panel onto the table. (See Fig. 1)
- Hand-tighten the (4) thumbscrews to ensure secure clamping of the Lower Switch Panel to tabletop. The panel should be firmly secured and fixed in place. Tighten only as much as is needed to prevent movement. Do not over-tighten as this may cause damage.

### Install the Adjustable Supporting Leg

- Not required if installed on optional Redbird TD Table.
- Position the Adjustable Supporting Leg under the threaded opening at the bottom right hand corner of the Lower Switch Panel. (See Fig. 2)
- Hand-tighten the leg so that it is fully secured to the Lower Switch Panel.
- To adjust the Adjustable Supporting Leg height, twist the lower portion of the leg until the foot pad has reached the floor. Hand-tighten the wing nut to secure the leg. (See Fig. 3)



Fig. 1

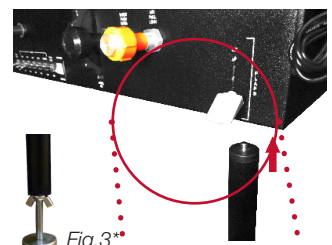


Fig. 2



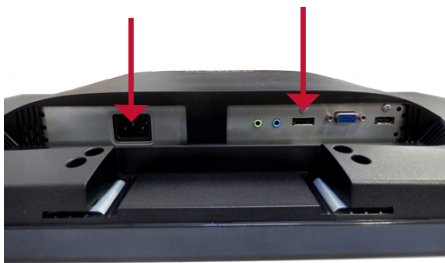


## FOR TD/TD2 INSTALLATION FOLLOW THESE STEPS

### STEP 2: Connect Monitor Cables

- Connect the monitor cable (HDMI) to the center monitor.
- Insert the power cable.

Insert Power Cable      Connect HDMI Monitor Cable



Be sure to watch cables to avoid them getting pinched or caught during the following steps.



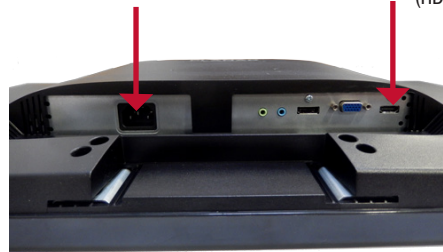
## FOR TD/TD2 PLUS 3-SCREEN EXPANSION INSTALLATION FOLLOW THESE STEPS

### STEP A: Connect Center Monitor Cables

- Insert the monitor cable (DVI-D to HDMI) to the center monitor.
- Insert the power cable.

Insert Power Cable

Insert Center Monitor Cable  
(HDMI to DVI)



Note: The left and right monitor use same port.

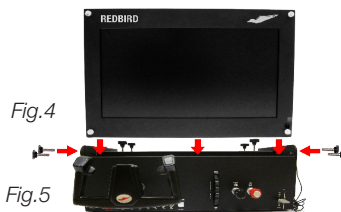
Be sure to watch cables to avoid them getting pinched or caught during the following steps.

### STEP 3: Position the Monitor

- Position the Monitor on top of the Lower Switch Panel, so that the holes are aligned. (See Fig. 4)
- Pass the (4) loose thumbscrews through the aligned holes to attach the Monitor and Lower Switch Panel.
- Hand-tighten the thumbscrews so that the Monitor is fully secured. (See Fig. 5)

Fig.4

Fig.5

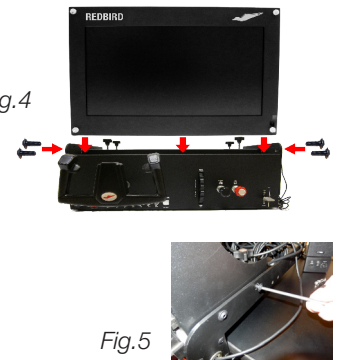


### STEP B: Position the Monitor

- Position the Monitor on top of the Lower Switch Panel, so that the holes are aligned. (See Fig. 4)
- Pass four (4) Support Screws through the aligned holes to attach the Monitor and Lower Switch Panel.
- Firmly tighten. (See Fig. 5)

Fig.4

Fig.5



### STEP 4: Position the Computer

- Place the Computer behind the Monitor on the Lower Switch Panel. (See Fig. 6)
- Ensure the back of the Computer is positioned toward the right side of the Monitor for easier access to the Computer ports.

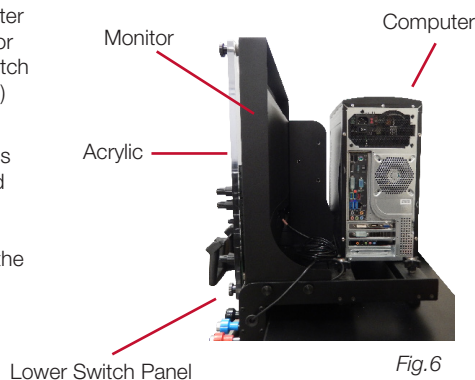
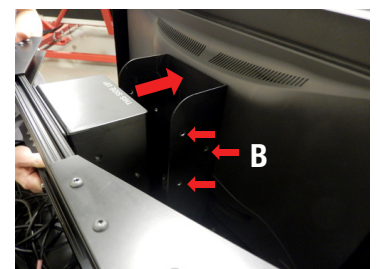


Fig.6

### STEP C: Attach Center Support Block

- Place center support block and framework as shown below. Make sure block is positioned with the correct side up (see sticker on block).
- Install Support Screws (ex. B), three (3) on each side.
- Firmly tighten.



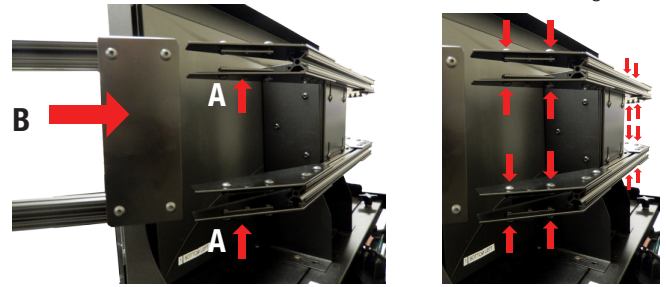
CONTINUE ON TO STEP 5

CONTINUE ON TO STEP D

**CONTINUE ON  
TO STEP 5**

## STEP D: Connect Monitor Wings

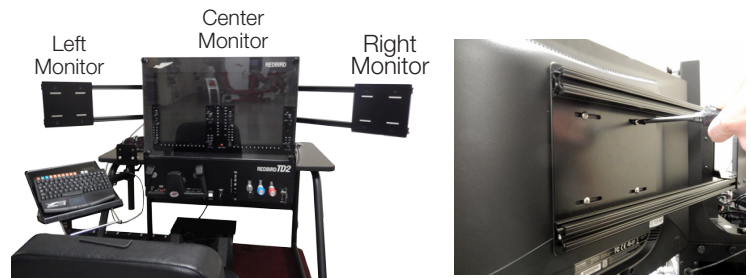
- Loosen wing hardware screws.
- Lift the lower screw brackets up slightly to help guide the wing (ex. A).
- Insert each wing (ex. B) with monitor plate facing pilot.
- Firmly tighten all screws on each wing, 16 total (fig. 1).



## STEP E: Install the Monitors

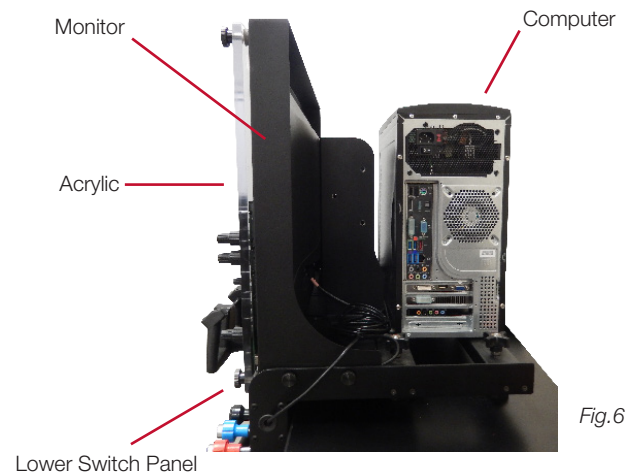
*We recommend having another person hold the monitors during installation.*

- Hold the monitor in place. It should touch the center TD monitor.
- Repeat with other monitor.
- Firmly tighten all screws. (8 total)



## STEP F: Position the Computer

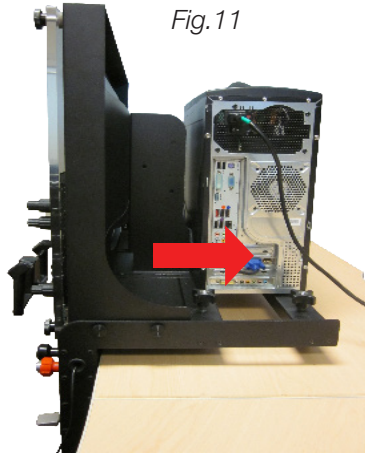
- Place the Computer behind the Monitor on the Lower Switch Panel. (See Fig. 6)
- Ensure the back of the Computer is positioned toward the right side of the Monitor for easier access to the Computer ports.



**CONTINUE ON TO STEP G**

## STEP 5: Connect the Monitor Video and Power Cable to the Computer

- Plug the opposite end of the Monitor Power Cord into a standard wall outlet.
- From the Monitor, plug the HDMI to DVI cable into the DVI port on the back of the computer. (See Fig. 11)

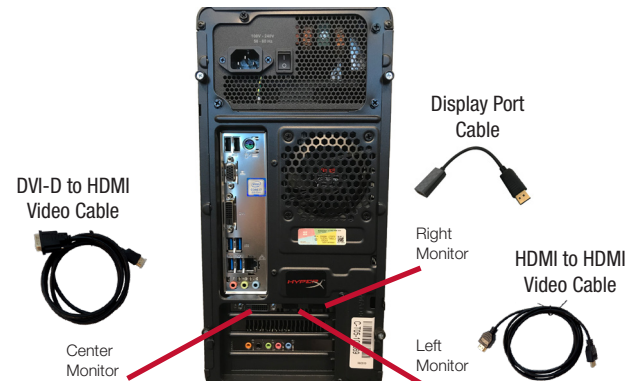


(Refer to STEP 2 for HDMI cable monitor)

### CONTINUE ON TO STEP 6

## STEP G: Connect the Monitors' Video and Power Cables to the Computer

- Connect Center monitor cable to the DVI port.
- Connect Right monitor cable to the Display Port adaptor cable, and then to the display port
- Connect Left monitor cable to the HDMI port.
- Connect power cables to each monitor and plug into standard wall outlet (or power strip).

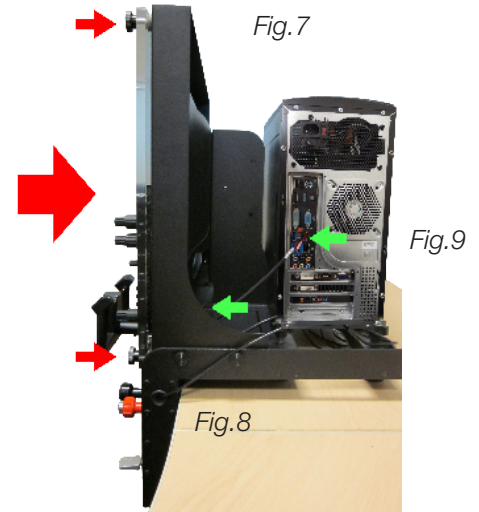


(Positions are from the pilot seat.  
Refer to STEP A for HDMI cable monitor port.)

### CONTINUE ON TO STEP 6

## STEP 6: Place and Connect the Acrylic

- Slide the Acrylic onto the four screws on the monitor frame.
- Hand-tighten the thumbscrews so the Acrylic is fully secured. (See Fig. 7)
- On the bottom left corner of the back of the monitor, plug a USB cable into the USB port on the Acrylic. (See Fig. 8) Plug the other end into the USB port on the back of the computer. (See Fig. 9)



## STEP 7: Connect the Lower Switch Panel

The Lower Instrument Panel USB cable connections will be located on the back of the Computer. Look for the USB ports that are similar in shape. (See Fig. 9)

- Plug the USB cable into USB port



Fig. 8



Fig. 9



## STEP 8: Connect the Keyboard and Speakers

### Keyboard

The Keyboard connection is located on the front of the Computer. (See Fig. 8)

- Plug the USB keyboard cable into a USB port on the front.

Fig.8



### Speakers

The Speaker connections will be located on the back of the Computer. (See Fig. 9)

- Plug the USB cable into a USB port. Plug the green audio cable into the green audio port.

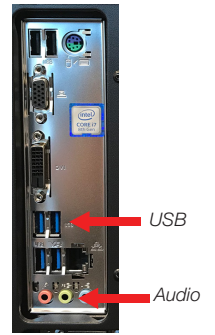


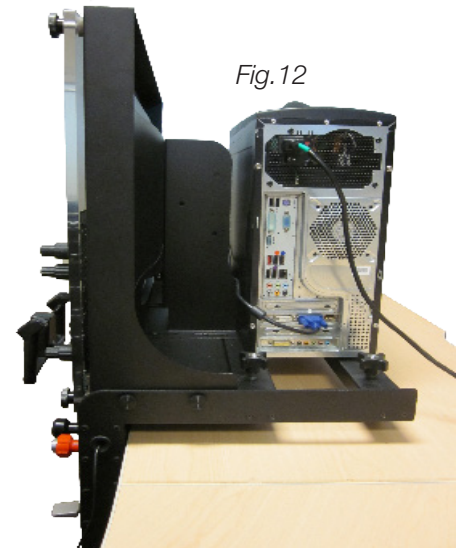
Fig.9



## STEP 9: Connect the Video and Power Cables

- Plug a Power Cable into the power port on the back of the computer. (See Fig. 12)
- Plug the opposite end of the green Power Cable into a standard wall outlet. (Volt Setting:115V)

Fig.12



## STEP 10: Start Up the Redbird TD

- On the back of the Computer, ensure the power switch is turned on. (See Fig. 14)
- Push the power button located on the front of the Computer. (See Fig. 15)
- The Redbird TD will turn on and the Begin Flight Menu will appear on the Monitor. (See Fig. 16)

Fig.14

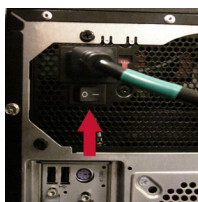


Fig.15



Fig.16



# CONGRATULATIONS!

**The installation is complete!**  
**Thank you for choosing Redbird Flight Simulations.**

**ENJOY!**

(Refer to Chapter 3 of the Instruction Manual,  
Using Your Redbird TD, for next steps.)

**Problems with installation should be directed to:**



TDsupport@redbirdflight.com  
Monday - Friday 7:30 am - 6:00 pm CST  
(512) 301-0755

